



# San Patricio County

## 4-H News

219 N. Vineyard, Sinton, TX 78387; Phone: 361-587-3400; Fax: 361-364-6237

### DATES TO REMEMBER

#### August 8

Club Manager Training / Meeting

#### August 14

4-H Summer Bash & Dance

#### August 17

4-H Council Meeting

#### August 19

Rabbit Clinic

#### August 25

Goat & Lamb Tag Orders Due

#### August 26

Quiz Bowl Camp

#### September 1

New 4-H Year Begins

#### September 4

Extension Office Closed

#### September 29

State Fair of Texas Begins



### August 2023



#### Club Manager Training / Meeting

Tuesday, August 8, 2023 at 6pm  
Extension Office

Each club should have at least one representative attend.

#### VALIDATION SCHEDULED

#### Sheep/Goats

October 19

Time: 4-6pm

County Fairgrounds - Show Barn

#### Registered Heifers

October 26

Time: 5 - 6pm

County Fairgrounds - Show Barn

#### Swine

November 11 & 18

Time: 9 am - 12 noon

County Fairgrounds - Show Barn

#### Non Registered Heifers

October 26

Time: 5 - 6pm

County Fairgrounds - Show Barn

#### Horse

October 16

Time: 5 pm - 7 pm

County Fairgrounds - Show Barn

#### Market Rabbit

December 29

Time: 5 pm - 8 pm

County Fairgrounds - Show Barn



#### 4-H Summer Bash & Dance

August 14, 2023; 4:00 pm - 10:00 pm

Leadership Activities, Games, Food & Fun

Bring a friend to join 4-H!

#### Major Show Information

##### Fort Worth Stock Show & Rodeo

January 12 - February 3, 2024

Fort Worth, Texas

[www.fwssr.com](http://www.fwssr.com)

##### Rio Grande Valley Livestock Show

March 7 - 17, 2024

Mercedes, Texas

[www.rgvls.com](http://www.rgvls.com)

##### San Antonio Stock Show & Rodeo

February 8 - 25, 2024

San Antonio, Texas

[www.sarodeo.com](http://www.sarodeo.com)

##### State Fair of Texas

Sept 29 - Oct 22, 2023

Dallas, Texas [www.bigtex.com](http://www.bigtex.com)

##### Heart O' Texas

October 5-15, 2023

Waco, Texas [www.hotfair.com](http://www.hotfair.com)

##### San Angelo Stock Show

February 1 - 18, 2024

San Angelo, Texas

[www.sanangelorodeo.com](http://www.sanangelorodeo.com)

##### Houston Livestock Show & Rodeo

February 27 - March 17, 2024

Houston, Texas

[www.rodeohouston.com](http://www.rodeohouston.com)

##### Star of Texas Rodeo

March 8 - 23, 2024

Austin, Texas

[www.rodeoaustin.com](http://www.rodeoaustin.com)



## 4-H COUNCIL

### MEETING

August 17  
at 6:00pm

It is very important  
that all club  
presidents and  
council delegates  
attend meeting!



### Meeting Schedule

Aug 6 - Rocking O  
Aug 9 - Gregory-Portland  
Aug 13 - Ingleside  
Aug 13 - San Pat Horse  
Aug 14 - Wildcat  
Aug 20 - Blue Ribbon  
Aug 20 - West Sinton  
Sept 10 - Clover T  
Sept 10 - Taft  
Sept 11 - Mathis

## ATTENDANCE

**4-H Club Meeting Attendance**  
All 4-H members that will be participating in the 2024 A&H Show in any division, including Homemaking, must attend 60% of club meetings. Attendance for the 2024 show started in January 2023. If a 4-H member is unable to meet the attendance requirements they **MUST** call and speak with Cameron Younts for an alternative option.

### Lamb & Goat Tags

Tag orders for the 2023-2024 stock show season will be due to the Extension Office on **August 25, 2023**. Any lambs or goats to be shown at any major show and / or the San Patricio & Aransas County A&H Show must be validated with a state tag. Tags are \$17 each. Order forms are available at the Extension Office or on the county website.

**All late tag orders will be \$30 each after August 25.**



### RABBIT CLINIC

Saturday, August 19, 2023

9:00 am - 11:00 am

San Patricio County Fairgrounds - Rabbit Barn  
219 W. 5th Street  
Sinton, TX



Clinic is **FREE** and open to all youth showing through 4-H and FFA.

**Topics:** Grooming, Ideal Weight, Cages & Supplies, Feed & Supplements, Showmanship and much more.

For more information and to RSVP call the Extension Office at 361-587-3400 or email [Cameron.younts@ag.tamu.edu](mailto:Cameron.younts@ag.tamu.edu)



### Quiz Bowl Camp

August 26, 2023

9:00 - 11:00 am

Extension Office, 219 N. Vineyard, Sinton

**Limited to 16 participants**

Come learn about Family & Community Health, Horse and Livestock Quiz Bowl. Quiz bowl contests provide an opportunity for youth enrolled in 4-H projects to demonstrate their knowledge on a specific subject matter in a competitive setting. Quiz bowl teaches life skills such as self-discipline, observation, listening, make and defending decisions.

**For more information and to RSVP call Cameron Younts at 361-587-3400.**

### 1st Annual Swine Clinic Presented by Lehman H Feeders & Feed Store

August 19, 2023

Richard M. Borchard Regional Fairgrounds

1213 Terry Shamsie Blvd, Robstown

10:00am - 1:00pm



Clinic is **Free** and open to all exhibitors.

**Topics:** Feeding programs, daily care, grooming, healthcare, pen maintenance, weight logs and showmanship

RSVP by August 12 to [lehmanhfeeders2022@gmail.com](mailto:lehmanhfeeders2022@gmail.com) with your name and 4-H Club.



## 2023 DISTRICT 11 4-H RECORDBOOK RESULTS



### *Senior*

Anna Decker; Animal Agriculture - Blue Ribbon  
 Georgina Funke; Goat - Blue Ribbon  
 Taryn O'Brien; Sheep - 3rd Place  
 Alexia Rodriguez; Beef - Blue Ribbon

Bryce Fishbeck; Photography - Blue Ribbon  
 Aaron Lowry; Rabbit - Red Ribbon  
 Kayden Ralls; Food & Nutrition - Red Ribbon  
 Hagen Schweizer; Horse - Blue Ribbon

Kotton West; Swine - 2nd Place

### *Intermediate*

Justin Atkinson; Swine - Blue Ribbon  
 Kaden Dreyer; Shooting Sports - 3rd Place

Blaise Decker; Goat - Blue Ribbon  
 Audrey Pullin; Horse - Blue Ribbon

Brooke Robinson; Poultry - Red Ribbon

### *Junior*

Bailey Brosig; Visual & Performing Arts - 2nd Place  
 Mikayla Castellano; Natural Resources - Blue Ribbon  
 Archer Hanson; Rabbit - 3rd Place  
 Arabella Rivas; Beef - Blue Ribbon

Payson Brosig; Fashion & Interior Design - 1st Place  
 Harlee Conley; Swine - Blue Ribbon  
 Payton 'Gracie' Kieschnick; Goat - Blue Ribbon  
 Tenley Threadgill; Horse - Blue Ribbon

Taylee West; Sheep - 1st Place

# AWESOME JOB!!

### ATTENTION: BOOSTER CLUBS

The 2024 A&H show will soon be upon us!

If you are a member of San Patricio County Farm Bureau, please ensure that your Membership Dues are up to date in paid status.

If you are not a member of San Patricio County Farm Bureau, we would be happy to welcome you. We offer our new members many opportunities and benefits.

Please call Debbie Loveday, San Patricio County Executive Secretary, at 361-364-1392, or email [DLoveday@txfb-ins.com](mailto:DLoveday@txfb-ins.com), for more information on assisting you with becoming a Member of San Patricio County Farm Bureau and/or any questions you may have.

#### Guadalupe County 4-H Livestock Judging Contest

September 16, 2023  
 Seguin Fairgrounds Complex  
 950 S. Austin St, Seguin

Pre-Registration Deadline: September 13

Entry Fee: \$40 team / \$10 Individual

Schedule of Events: 8:00 am - Registration at Cattle Barn;  
 8:45 am - Orientation  
 9:00 am - Judging Starts followed by awards

For more information contact:  
 Guadalupe County Extension at [j-hanselka@tamu.edu](mailto:j-hanselka@tamu.edu)

#### Gaines County 4-H Trap & Skeet Club

William van Zielst Memorial Shoot  
 August 5, 2023

Join us at our sporting clay range

Shooting 100 sporting clay targets each  
 \$150 per shooter (meal included)  
 9:00 am - Morning Rotation; Lunch at 12 noon after shoot  
 Door prizes given away during lunch. 1 of every 10 shooters wins a gun

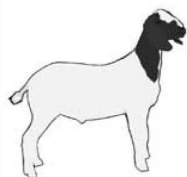
More information contact:  
 Wesley Butchee 806-752-2700 or  
 Gaines Extension Office at 432-758-4006

### Young, Beginning & Small - AgVista Loan Program

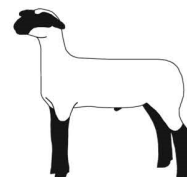
What can an AgVista Customer Borrow: Farmland & Ranchland, Operating Capital, Livestock & Equipment, and Agribusinesses

Contact your local Capital Farm Credit office for find out more information.





## 2023-2024 GOAT & LAMB TAG ORDER FORM



2024 SPRING MAJOR SHOWS AND THE 2024 A&H SHOW

**Deadline: August 25, 2023**

Payment must be attached.

**Please Print**

Exhibitor Name(s) \_\_\_\_\_

Club \_\_\_\_\_ E-mail \_\_\_\_\_

Phone \_\_\_\_\_

Animal	# of Tags	\$17 each / Total
Market Lamb		
Market Goat		
Breeding Sheep		
Jr. Wether Dam		
Breeding Goat		
Jr. Wether Doe		
<b>Total</b>		

**IF PAYING WITH CASH - ONLY EXACT CASH WILL BE ACCEPTED**

Make check payable to  
**San Patricio County 4-H Council**  
 Mail form with payment to:  
 Texas A&M AgriLife Extension Service  
**Goat/Lamb Tag Orders**  
 219 N. Vineyard  
 Sinton, TX 78387

**All Late & Replacement Tag Orders will be \$30.00 per tag**

**Lamb & Goat Validation Date:**

October 19, 2023  
 Time: 4:00 - 6:00 pm  
 County Fairgrounds

*Important  
DATE!*

*Important  
DATE!*

**ENROLLMENT BEGINS  
SEPTEMBER 1**

**4-H**   
**ENROLLMENT  
INFORMATION**



**FAMILY ENROLLMENT TIPS**  
**texas.4honline.com**

**NEW FAMILY**

1	2	3	4	
Select to set up a profile Setup only one family profile per household.	Start adding members. Enter one member profile at a time. The Next button will take you through each screen.	Review Fees Youth Fees vary with date enrolled. Adult Fees pay \$10.00.	<b>YOUTH</b>	<b>Adult</b>
Enter an e-mail address that is checked often. This will be how you get communication.	Enter information in all the fields on the Questions screen. Youth Birthdate and school grade determines eligibility.	Add and select a credit card to pay for the fees.	Review enrollment and fees. Click Back to make corrections. Click Submit.	Review enrollment and fees. Click Back to make corrections. Click Submit.
Create a password. Requirements are displayed on the screen if not validated.	Youth selects at least one club and one project. Adult selects volunteer type, clubs and projects.	Or select payment collected by county office. A confirmation screen will popup.	Status changes to pending. Local county office reviews and approves.	Adult completes Screening and Required trainings.
Complete all family information.	Complete the Health and Consents Screens. Click Next through each screen.	Select payment and agree to Payment and Refund terms.	Payment is locked-in. Credit card is charged or county mails payment.	Status changes to pending. Local county office approves. Payment is locked-in. Credit card is charged or county mails payment.
			Status changes to approved after payment is received.	Status changes to approved after payment is received, screening approved and trainings completed.

Contact the local county office before starting a profile, to make sure you are selecting a club which fits your family needs.  
Find your local county office online at: <http://counties.agrilife.org>

**RETURNING FAMILY**

1	2	3	4	
Login with the family email address and password. Requirements are displayed on the screen if not validated.	Click Enroll Now next to the member's name.	Review Fees Youth Fees vary on date enrolled. Adult Fees are \$10.00.	<b>YOUTH</b>	<b>Adult</b>
Contact the local county Extension Office for password assistance or click Reset Password link.	You can only enroll one member at a time.	Add and select a credit card to pay for the fees.	Review Enrollment and fees. Click Back to make corrections. Click Submit.	Review Enrollment and fees. Click Back to make corrections. Click Submit.
<b>Do Not Create a NEW Family Profile.</b>	Click Next through each screen. You must enter school, grade, clubs and projects.	Or select payment collected by county office. A confirmation screen will popup.	Status changes to pending. Local county office reviews and approves.	Adult completes screening and required trainings. (if applicable)
Review and update family information.	Complete the Health and Consents Screens.	Select payment	Payment is locked-in. Credit card is charged or county mails payment.	Status changes to pending. Local county office approves. Payment is locked-in. Credit card is charged or county mails payment.
			Status changes to approved after payment is received.	Status changes to approved after payment is received, screening approved and trainings completed.

If the family has moved to a NEW county in Texas, contact local county office to have the FAMILY PROFILE moved to the new county. **Do not create a new profile.**

The system will send automatic notifications to the family email address in the system.

## Helpful Links:

### Texas 4-H Website

<http://texas4-h.tamu.edu/>

### Register for 4-H

<http://texas.4honline.com>

### San Patricio County Website

<http://sanpatricio.agrilife.org>

### District 11

<http://d114-h.tamu.edu/>

### San Pat/Aransas A&H Show

<http://sanpatahshow.com/>

### Online 4-H Record book

<http://4hreports.com/>

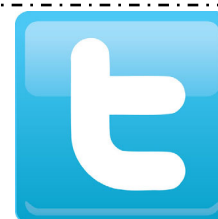
### 4-H Mall

<http://4-Hmall.org/>



To be eligible to compete in the A&H Show in any division, (including Homemaking) you must attend at least 60% of club meetings. Attendance for the 2024 Show starts in January, 2023. You must also meet **UIL academic eligibility requirements** by passing all of your classes. Start out the 4-H year right by attending club meetings and keeping your grades up!

**New 4-H members** must also attend 60% of their club meeting, however, their club attendance begins on Sept. 1, 2023. Only new 4-H members will be allowed to count January 2024 attendance.



Like us on Facebook and follow us on Twitter! Feel free to share any pictures you have of you or your fellow 4-Hers in action!



If your address changes,  
**PLEASE** correct it on 4-H Online:  
<http://texas4-h.tamu.edu/>



The address needs to be corrected on the family profile AND in each individual's profile. The labels for the newsletter and other miscellaneous mailings are generated by the information entered by you or your family. Don't risk missing out on the monthly 4-H newsletter or other important mailings!



### Reminder:

If your animal loses its validation tag, call the Extension Office ASAP with the tag number so that a replacement can be ordered.

### ADULT VOLUNTEER BACKGROUND CHECK

To protect our 4-H members, the Texas 4-H Program administers an adult screening program. This screening is conducted every 3 years. All adults who will be working directly with youth (other than their own children) must complete the adult registration form on 4-H Online to be screened. Once their registration has been approved from the State office, then we can certify those adults as San Patricio County volunteers. Only those adults who have been screened and cleared through YPS will have the privilege of working with 4-H members. There is a \$10 annual fee for each adult who will be a Volunteer. This fee is paid on 4-H Online.



# August 2023



Sun

Mon

Tue

Wed

Thu

Fri

Sat

		1	2	3	4	5
6	7	8 Club Manager Training / Meeting	9	10	11	12
13	14 Summer Bash	15	16	17 4-H Council Meeting	18	19 Rabbit Clinic
20	21	22	23	24	25 Sheep & Goat Tag Orders Due	26 Quiz Bowl Camp
27	28	29	30	31		

## TEXAS 4-H AGE CATEGORIES

(9-1-23 through 8-31-24)

**Clover Kids:** Kinder through 2nd grade

**Juniors:** 3rd - 5th grade as of Sept. 1, 2023

**Intermediates:** 6th - 8th grade as of Sept. 1, 2023

**Seniors:** 9th - 12th grade as of Sept. 1, 2023



### UPCOMING EVENTS

#### September 2023

- 01: NEW 4-H year begins
- 04: Extension Office Closed
- 29: State Fair of Texas Begins

#### October 2023

- 05: Heart O' Texas Begins
- 16: Horse Validation
- 19: Sheep & Goat Validation
- 26: Heifer Validation